

Hilco Industrial, LLC

ONLINE AUCTION

By order of the US Bankruptcy Court, for the Western District of Virginia



Late Model CNC Multi-Axis Laser Cutting Systems & CNC Tube Fabrication Equipment



Online Bidding Starts: Monday, July 26th
Online Bidding Ends: Wednesday, July 28th
Assets Located in Lynchburg, Virginia

Hilco Industrial, LLC

A u c t i o n e e r s • L i q u i d a t o r s • A p p r a i s e r s

Atlanta • Birmingham • Birmingham (UK) • Boston • Charlotte • Chicago • Dallas • Detroit
Grand Rapids • Guadalajara (MX) • Hong Kong • Irapuato (MX) • Leeds (UK) • London (UK) • Los Angeles
Mexico City (MX) • Monterrey (MX) • New York • Phoenix • San Francisco • Toronto • Villahermosa (MX)

www.hilcoind.com

ONLINE AUCTION

By order of the US Bankruptcy Court,
for the Western District of Virginia



Online Bidding Starts

MONDAY, JULY 26TH AT 10AM ET

Online Bidding Ends

WEDNESDAY, JULY 28TH

PLEASE CHECK WWW.HILCOIND.COM FOR CLOSING TIMES

Preview

Monday, July 26TH • 9AM to 4PM Local Time • Please contact Tim Pfister at 847.313.4747 or Email tpfister@hilcoind.com for more information.

Preview Location

3720 Cohen Place • Lynchburg, VA 24501

Directions to Preview

From Lynchburg Regional Airport: Exit Airport Turning Left On US-29 North. Immediate Exit To Right, Following US-29 North, Towards Appamatox / Charlottesville. Proceed 1-1/2 Mile To Left Exit Towards Downtown Lynchburg, Rt. 501 North. Proceed 1/2 Mile To 1st Traffic Signal, Rt. 128 East (Mayflower Rd.). Turn Right, Proceed 3/4-Mile To 2nd Right, John Capron Rd. Turn Right, Proceed 1/4-Mile To First Right, Cohen Place. Turn Right, Plant Is Up Hill On Left.

Further Information

- A buyers premium will be in effect. Auctions will be conducted in English, accepting U.S. Currency only.
- The Removal Deadline is Friday, August 13, 2010 with hours of removal between 8am to 4pm Monday thru Friday. After the noted removal deadlines at 4pm, the buyer will incur a cost of \$500 daily for entry into the facility.
- For further information please contact Tim Pfister at 847.313.4747 or Email tpfister@hilcoind.com
- For Payments, contact Hilco Accounts Receivable at 616.732.1800 x19 or Email hin_ar@hilcoind.com
- For Customer Service, please contact Sandi Neely at 248.254.9999 x16 or Email sneely@hilcoind.com

PRIME INDUSTRIAL REAL ESTATE PROPERTY AVAILABLE



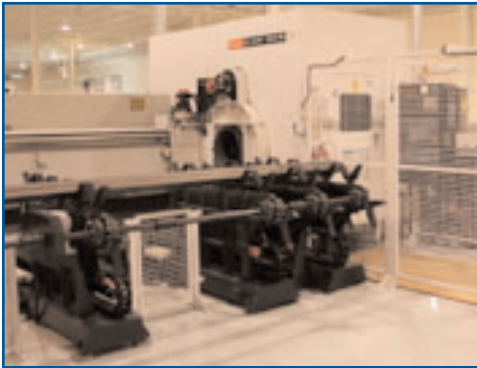
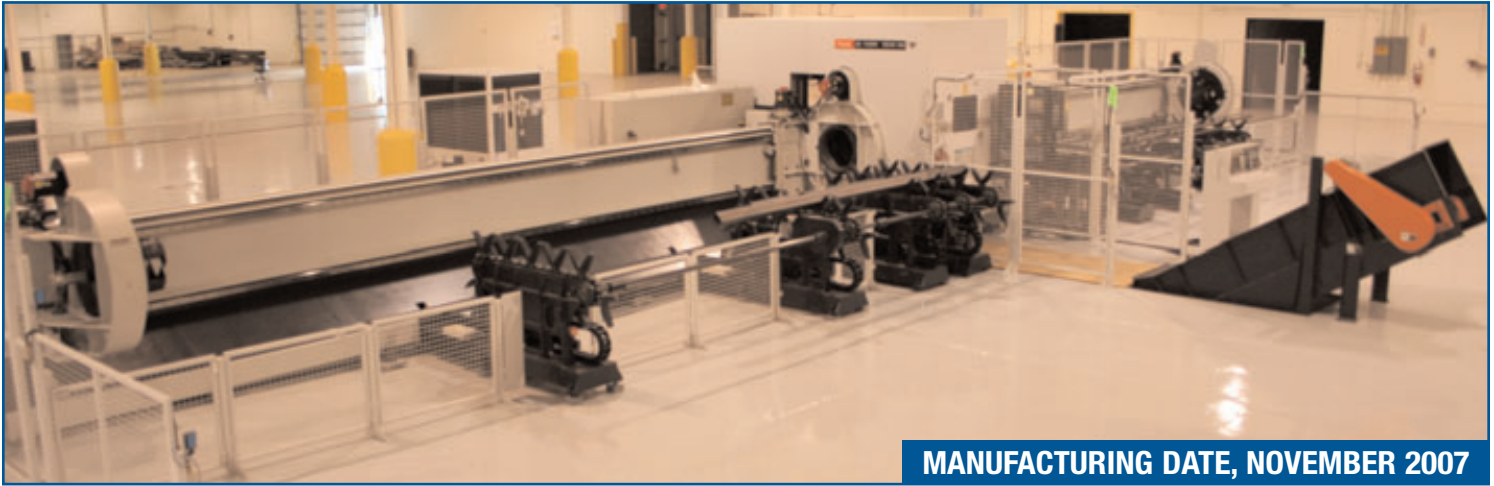
3720 COHEN PLACE, LYNCHBURG, VIRGINIA

- **Building Size:** 56,900 sq. ft. ± (9,600 sq. ft. ± office, 47,300 sq. ft. ± production)
- **Land Area:** 10 acres ± (see tax map & site plan attached)
- **Location:** 3/4 mile from US 460 / Candler's Mountain Rd. interchange
- **Age:** 1970
- **Zoning:** I-3
- **Water:** 12" line in Cohen Place (City of Lynchburg)
- **Sewer:** 10" line in Cohen Place (City of Lynchburg)
- **HVAC:** Building is totally heated & cooled with Carrier gas package units (approximately 2 years old)
- **Power:** 2000 AMP 480 volt 3-phase
- **Gas:** Columbia Gas
- **Lighting:** Office Areas = fluorescent
Production Area = Metal Halide & Fluorescent
- **Sprinkler:** Production area sprinkled with a wet system, office areas are not.

- **Eave Height:** 20' to bottom of bar joist. Clear height estimated to vary from 16' to 18'
- **Security System:** Yes
- **Loading:** 4 – docks with levelers & dock seals, lights & 8' w x 10' h doors
2 - 20' w x 14' h drive-in doors
3 - 8' w x 10' h drive-in doors on side of dock areas
(larger overhead doors are electric)
- **Column Spacing:** 25' x 50' with some variation
- **Office Finish:** Pre-engineered wall panels & painted block walls, 2' x 2' Lay-in ceilings with 2' x 4' recessed fluorescent lighting. Composition tile floors.
- **Production Areas:** Exposed walls & ceilings, concrete floor with floor drains.
- **Parking:** Large paved areas on both sides of the building for trucking, outside storage, and employee parking spaces. Easily expandable.
- **Miscellaneous:** Super broadband fiber optic is to the building

For more information regarding the real estate, Please contact
Rick Read 434.455.3618 or Ricky Read at 434.841.3659 or Email read@realestatelynchburg.com

CNC TUBE & PIPE LASER CUTTING MACHINE



MAZAK 3D FABRI GEAR 300 MULTI-AXIS CNC TUBE & PIPE LASER CUTTING MACHINE

S/N 200661, (Manufacturing Date, November 2007), Maximum Tube Size; Round - 267.4mm Diameter x 8000mm Length (10.52" x 26.2 Ft.), Square - 203.2mm x 8000mm Length (8" x 26.2 Ft.), Maximum Load Capacity 480 Kg (1058 lbf), Rated Laser Output 4000 Watt, Laser / Model YB-L 4008M 4E, NC Unit; Mazak & Fanuc L-64 Fanuc Power Mate, Primary Axis Stroke: X - 8750mm (344.5"), U - 9100mm (358.3"), V - 2315mm (91.14"), Y - 1270mm (50.0"), Z - 370mm (14.57"), A - +/- 99999.99 Degree, B - +/- 135 Degree, Transportation Arm Stroke: X, Y, Z, A - Axis 875mm (34.45"), U, V, W, B - Axis 265mm (10.43"), Fanuc Series 160i-L Main Pendant Style Control, Fanuc Power Mate Portable Console Bundle Loader Control Stand, 6 - Spindle Tapping Head, Renishaw LP-2 Touch Sensor Probe Head, Tool Breakage Monitor, Tapping Cycle Control, U & X Axis Rotary Chucks & Pushers, V -Axis & Center Rotary Chucks, Servo Drive 4-Strand Load / Unload Conveyors, w/ 1) - Orion Model RKL-15000 D-A2 Process Cooling Water Chiller, S/N 7710007, Capacity 40.5 Kw, Mass 700 Kg, Refrigerant R407C / 5.6 Kg x 2, Microprocessor Digital Control, 1) - Yamazaki Transformer, 3AC, 230/460 V, 50/60 Hz, Max. 250A, Rated Short Circuit Breaking Capacity 30/15 KA, *Note; Electrical Disconnect Switch To Remain With Building. Wires To Be Disconnected And Pulled From Bottom Of Disconnect Switch., 1) - Farr Gold Series Model GSP Dust Collector, S/N 812389A, Part No. 212884054, Pneumatic Pulse-Jet Cleaning, Farr Dust Collector Controller w/ Pulse Cleaning Control Selector, *Note; Ductwork To Be Removed In Its Entirety. Building Wall Outlets Must Be Properly Capped & Sealed, And Be Approved By Building Owner., 1) - Jorgensen 30" Wide Hinged Metal Belt Scrap Removal Conveyor, S/N A-070868-1, 1) - Enclosure Fencing w/ SICK Light Curtain Eyes, 31 Hours - 58 Minutes Run-Time Indicated On Control

CNC LASER CUTTING MACHINE



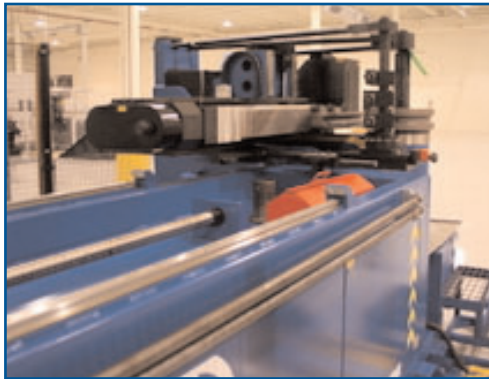
MAZAK SPACE GEAR - 510 MK II 6-AXIS CNC LASER CUTTING MACHINE

S/N 194102, (Manufacturing Date, December 2006), Maximum Workpiece Size 3050 x 1525 x 22 mm (120.1" x 60.0" x 0.87"), X-Axis Stroke 3335 (131.5) mm (in), Y-Axis Stroke 1545 (60.8) mm (in), Z-Axis Stroke 420 (16.5) mm (in), A-Axis +/- 360 Degrees, B-Axis +/- 135 Degrees, Maximum Load Capacity 7.9 / 1780 kN / lbf, Rated Laser Output 4000 Watt, Laser / Model Co2 Laser YB-L400A-8M-4E, NC Unit: Mazak & Fanuc L-64, Fanuc Series 160i-LB Control, Hand Teach Pendant, Rotary Axis Head w/ 11" 4-Jaw Chuck, 6-1/8" Clear-Hole-Thru-Spindle, w/ 1) Orion Model RKL-15000D-A2 Cooling Water Chiller, S/N 611002, Capacity 40.5 KW, Mass 700 Kg., Refrigerant R407C / 5.6 Kg x 2, Microprocessor Digital Control, 1) Yamazaki Transformer, 3AC, 230/460 V, 50/60 Hz, Max. 250 A, Rated Short Circuit Breaking Capacity 30/15 KA, *Note; Electrical Disconnected Switch To Remain With Building, Wires To Be Disconnected And Pulled From Bottom Of Disconnect Switch, 1) Farr Gold Series Model GSP Dust Collector, S/N 812389B, Part No. 212884054, Pneumatic Pulse-Jet Cleaning, Farr Dust Collector Controller w/ Pulse Cleaning Control Selector, *Note: Ductwork To Be Removed In It's Entirety. Building Wall Outlets Must Be Properly Capped & Sealed, And Approved By Building Owner

CNC TUBE BENDER



MANUFACTURING DATE, OCTOBER 2007

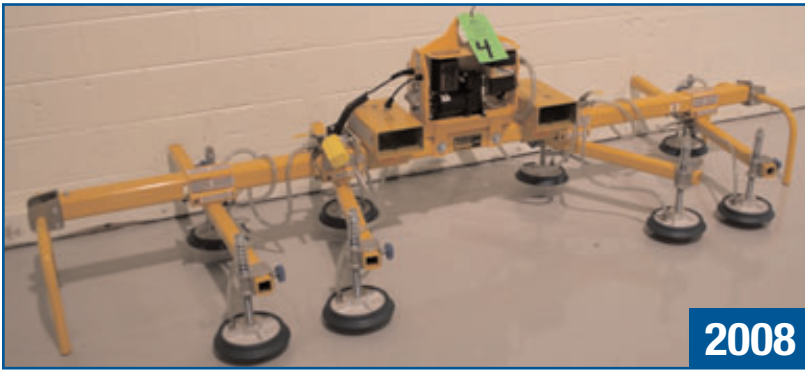


UNISON BREEZE 100MM ALL-ELECTRIC CNC TUBE BENDER

S/N 2606, (Manufacturing Date, October 2007), Maximum Tube Size 100mm (3.94") Diameter x 4mm (0.157") Wall Thickness Mild Steel - Empty Bending, Maximum Tube Size 100mm (3.94") Diameter x 2mm (0.078") Wall Thickness Mild Steel - With Mandrel & Wiper Die, Maximum Tube Size 100mm (3.94") Diameter x 2.5mm (0.098") Wall Thickness Stainless Steel - Empty Bending, Maximum Tube Size 100mm (3.94") Diameter x 1.5mm (0.059") Wall Thickness Stainless Steel - With Mandrel & Wiper Die, Maximum CLR; 400mm (4D) / 15.74", Maximum Tube Bend Angle 190 Degree, w/ Servo Mandrel Extraction, Laser Correction System, Carriage Push Servo Roll Forming, Unison PC Based Controls, Enclosure Fencing w/ Light Curtains, With: Die Storage Rack, 3) 48" x 36" Roll-Out Shelves, Maximum Capacity 2000 Lbs Per Shelf, Dies Including: 1.5" Round, 1.5" Roll Form, 1.75" Round, 1.75" Roll Form, 2" x 3" Rectangle, 2" x 4" Rectangle

To register to bid, view the lot catalog & photos, please visit

www.hilcoind.com

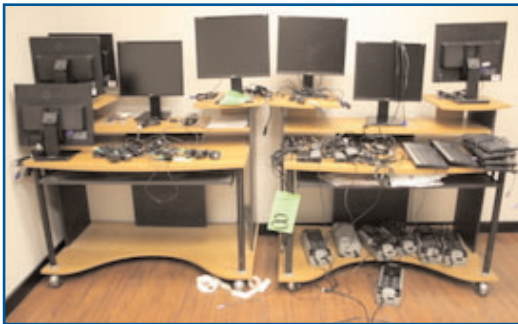


ANVER VPF-57-L & L200MB-110-4/4 VACUUM SHEET LIFTER ATTACHMENT

S/N S0080001428, (2008), Rated Load Capacity 2000 Lbs., Maximum Load Length 12', Maximum Load Width 6', 8) 9" Diameter Adjustable Vacuum Lifting Pods, Vacuum Generator # VPF-57-DCP Vac-Pack, Power Required 12V DC / 16A, Unit Weight 412 Lbs.

FARO ARM PLATINUM P-12 PORTABLE ADJUSTABLE ARM COORDINATE MEASURING MACHINE

S/N P12-0206-04605 (Manufacturing Date, December 2006), Single Point Accuracy 0.061mm, P/N ACCSO134 Tri-Pod Stand, S/N 03H1820



- Motorola AXU4100 (18) - Hand-Held 2-Way Radios, (3) - 6-Bank Battery Charging Stands, (18) - Model RLN 4940 Single Unit Dest Top Battery Chargers, (7) - Model 53866 Earbud w/ Clip Push-To-Talk Microphones
- Computer Equipment, Including: (8) - LG Flatron L 1953H-BF Flatscreen Monitors, (6) - Hard Wire HP Keyboards, (10) - Hipro Model HP-02040D43 AC Power Adaptors, (10) - HP Hard Wire Mouses, (7) - Belkin 375 VA Battery Back-Up + Surge Protectors, (2) Portable Computer Workdesks
- Dish Network Dish Pro 311 (4) Antenna Dish Receiver Boxes & (2) Work Desks
- Staples SPL-S302D Paper Shredders, 30 - Sheet, Item # 723134
- GE Profile Water Cooler
- (6) 36" X 36" Lunchroom Tables, (33) Stacking Plastic Arm Chairs, Transport Cart
- (5) High Back Swivel Arm Chairs, Brown
- (8) Upholstered Swivel Arm Chairs, Blue-Grey

- Sofa
- Corkboards, (1) 8' x 4', (2) 4' x 4'
- Office Cabinets; (1) 5-Drawer Lateral File, (1) 4-Drawer Letter File, (1) 6' 2-Door, (1) Bookcase
- Wrap-Around Desk Set
- (2) Work Desk Stations
- (4) Side Arm Chairs, Black
- Office Furniture; (1) 10' Conference Table, (6) High Back Swivel Arm Chairs, Black, (1) Stationary 2-Station Work Desk, (1) Portable Computer Desk, (1) 5-Drawer Lateral File
- Office Furniture; (1) Wrap-Around Workdesk, (1) 2-Drawer Lateral File, (1) Portable Computer Desk, (2) Black Side Chairs, (1) Projector Screen
- (6) 5-Drawer Lateral File Cabinets
- Reception Desk & 2-Door Stand
- Operations Department Furniture, Cabinets, Misc. Service Parts

OFFICE FURNITURE • STEEL STOCK INVENTORY



- Supply Room Racks, Misc. Supplies
- Steel Stock Inventory, Including: (40 pc's) 3" x 2" x 24' Length Square Tube, est. 1/16" Gauge, (42 pc's) 4" x 2" x 24' Length Square Tube, est. 1/16" Gauge, (24 pc's) 1-1/2" OD / 1-9/32" (est.) ID x 24' Length Steel Tube, (35 pc's) 1.750" OD x 1.560" ID Steel Tube, 24' Length, ASTM - A513/5, (3 pc's) 4' x 8' x 1/4" Uncut Carbon Steel Sheet, (5 pc's) 4' x 8' Various Sheet, Cut Remnants, (3 pc's) 4' x 8' Various Non-Ferrous Sheet, Cut Remnants, (Lot) National Partitions Steel Structure, Skidded, Unassembled, Styrofoam Panels, Ceiling Tiles
- Roura Iron Works 2T-3/16-SL-1/3-LOW 1/3 Cu Yd Self Dumping Hoppers, 1/3 Cubic Yard Volume Capacity, 4000 Lb. Weight Capacity, Weight 430 Lbs.
- Paltier Pallet Racking, Including: (37) - Uprights, 36" Deep x 16' High, Tear-Drop Style, (5) - Uprights, 48" Deep x 16', Tear-Drop Style, (422) - 8' Cross Beams, Wood Deck Boards
- (2) Custom Stock Car Frame / Cage Assemblies, Scrap



Hilco Industrial, LLC

Auctioneers • Liquidators • Appraisers

Headquarters

31555 W. Fourteen Mile Road, Suite 207
Farmington Hills, MI 48334
Ph: 248.254.9999
Fx: 248.254.9995
www.hilcoind.com

Forwarding Service Requested



HILCO ONLINE AUCTION

By order of the US Bankruptcy Court, for the Western District of Virginia



Late Model CNC Multi-Axis Laser Cutting Systems & CNC Tube Fabrication Equipment



Online Bidding Starts: Monday, July 26th
Online Bidding Ends: Wednesday, July 28th
Assets Located in Lynchburg, Virginia

Terms of Sale

A buyer's premium of 16% for all sales is in effect. Everything will be sold to the highest bidder online for cash, in accordance with the Auctioneer's customary "Terms of Sale", copies of which will be posted on www.hilcoind.com and subject to additional terms. All items will be sold "as is, where-is" without any warranties, express or implied. Although obtained from sources deemed reliable, the Auctioneer makes no warranty or guarantee to the accuracy of the information herein contained. Bidders are encouraged to thoroughly inspect the items on which they intend to bid prior to sale. Absolutely no items will be removed until the day after the conclusion of the sale and payment is made in full. Subject to additions, deletions and prior sale.

Payment: ALL PURCHASES MUST BE PAID IN FULL ON THE DAY OF THE AUCTION. If you intend to pay by wire transfer, we will accept payment the day after the sale ONLY IF a deposit of 25% of total purchases is made on the day of the sale. Contact our office for wire transfer instructions. Only cash, wire transfer or certified check, payable to Hilco Industrial, LLC will be accepted. Company checks payable to Hilco Industrial LLC will be accepted only if accompanied by a bank letter of guarantee, (see sample letter below). All sales are subject to sales tax. Purchasers claiming exemptions from taxes must provide proof satisfactory to the Auctioneer of their entitlement to claim such exemptions.

Sample Bank Letter

(Bank Name) unconditionally guarantees payment to Hilco Industrial, LLC from (Company Name). This guarantee will be valid for purchases made at the Auction of Precision Manufacturing on July 28, 2010.

